

Series 24 Lok-Tainer

CONNECT AND PROTECT

WEIGHT

.97g/cm (.087 oz/in)

MATERIALS AND FINISH

HOUSING

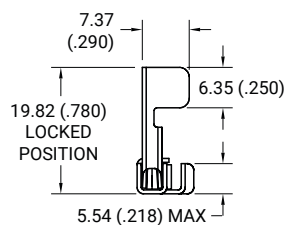
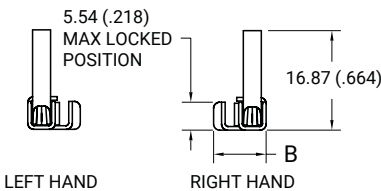
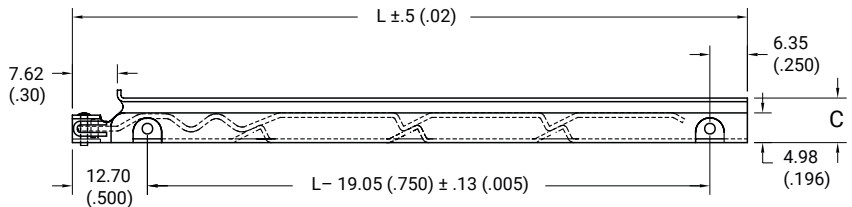
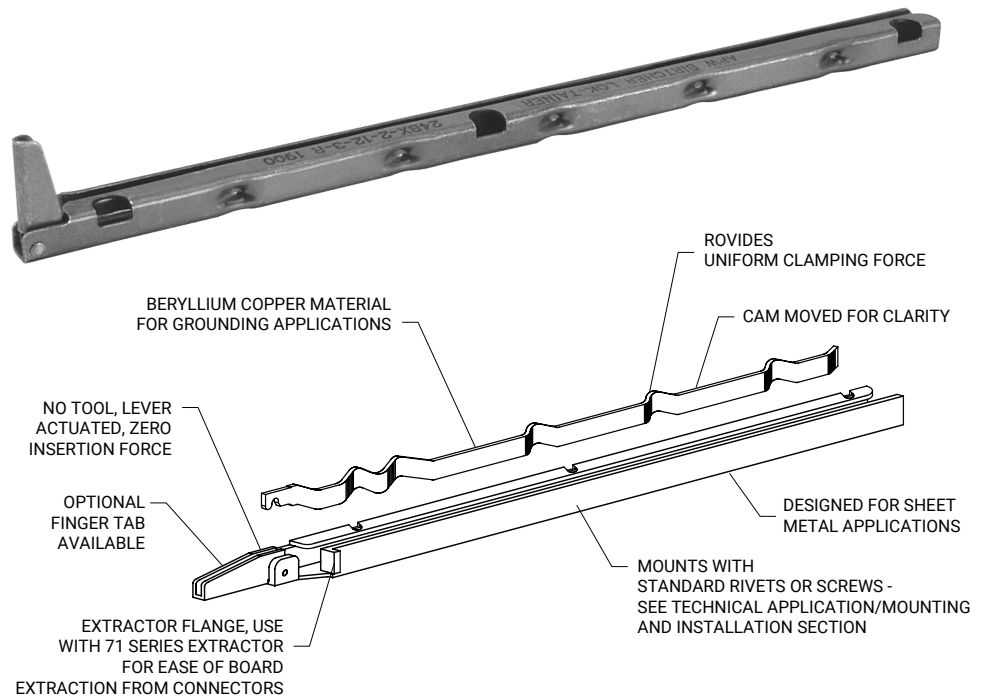
- **Material:** .025-in. (.64-mm) thick Beryllium Copper per QQ-C- 533 or .024-in. (.61-mm) thick Cold Rolled Steel per ASTM A-366
- **Finish:** See finish table on opposite page

CAM

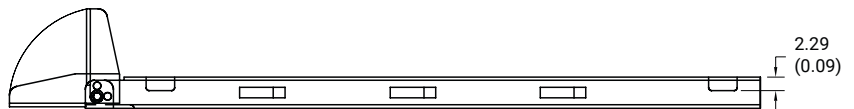
- **Material:** Beryllium Copper per QQ-C-533

LEVER

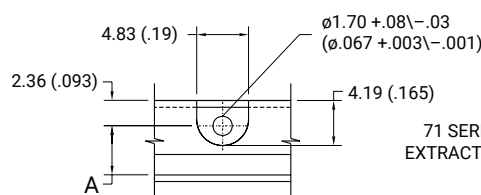
- **Material:** Cold Rolled Steel per ASTM A-366
Note: Beryllium Copper lever furnished when housing is unplated
- **Finish:** See finish table on opposite page



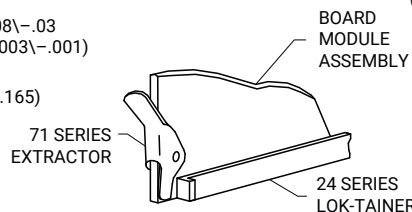
FINGER TAB OPTION
NOT TO SCALE - LEFT HAND SHOWN



Units: mm (in)
unless specified otherwise,
.xx = ±.25, x = ±.5
(.xxx = ±.010, .xx = ±.02)



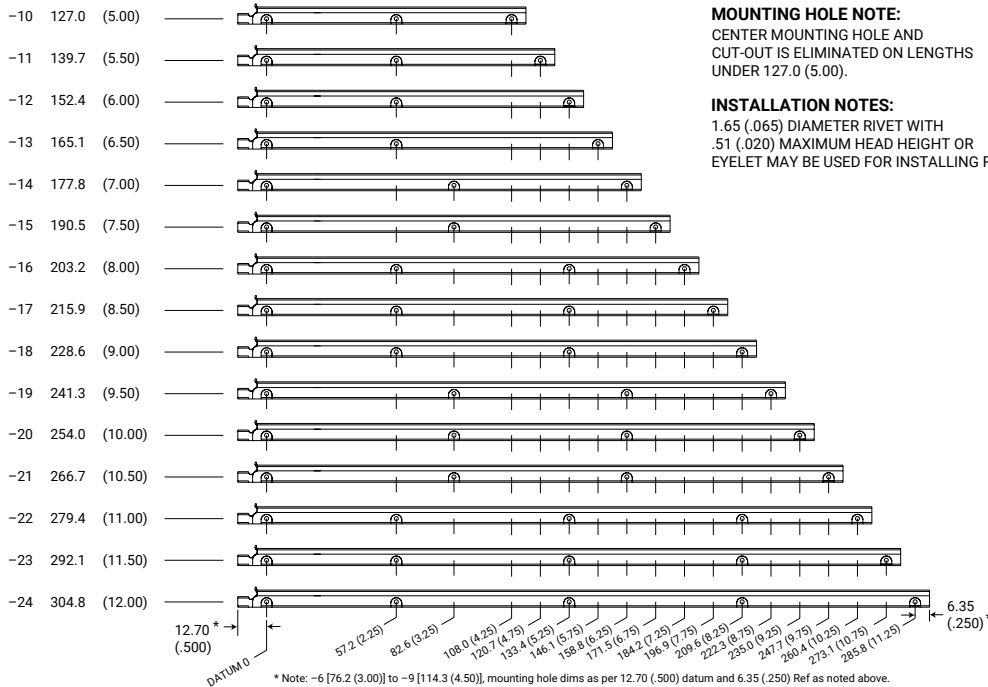
MOUNTING HOLE DETAIL
NOT TO SCALE



71 SERIES EXTRACTOR
OPTIONAL/ NOT TO SCALE

SERIES 24 LOK-TAINER

MOUNTING HOLE DIMENSIONS



MOUNTING HOLE NOTE:
 CENTER MOUNTING HOLE AND CUT-OUT IS ELIMINATED ON LENGTHS UNDER 127.0 (5.00).

INSTALLATION NOTES:
 1.65 (.065) DIAMETER RIVET WITH .51 (.020) MAXIMUM HEAD HEIGHT OR EYELET MAY BE USED FOR INSTALLING RETAINERS.

Part Number Code	
Series 24 LOK-TAINER Lever Actuated	T 24 B X - 2 - 10 - 5 - L
Finger Tab	
Finger tab _____ T	
None _____ [Blank]	
Housing Material	
Beryllium Copper _____ B	
or select from Materials Table	
Extractor Flange	
(Standard) _____ X	
None _____ [Blank]	
Board Thickness	
1.60 (.063) PCB Thickness _____ 2	
or select from Board Thickness	
Length	
Length in 12.7 (.50) increments _____ 6 [76.2 (3.00)]	
_____ to 24 [304.8 (12.00)]	
Finish	
Gold Plate _____ 5	
or select from Finish Table	
Lever Action	
Left hand _____ L	
Right hand _____ R	

Part Number Code example: 24BX-3-10-6-L

Series 24 Lever-actuated LOK-TAINER, Beryllium Copper housing with flange, 2.39-mm (.094-in.) thick board, 127.2-mm (5.00-in.) long, nickel plate finish and left hand lever action

MATERIALS TABLE

CODE LETTER	MATERIAL
B	BERYLLIUM COPPER, 1/4H PER ASTM-B-194
S	STEEL PER ASTM-A-366

BOARD THICKNESS TABLE

DASH #	THICKNESS +.127 / -.000 +.005 / -.000	A	B	C
-1	0.79 (.031)	4.58 (.180)	8.89 (.350)	7.55 (.297)
-2	1.60 (.063)	4.58 (.180)	8.89 (.350)	7.55 (.297)
-3	2.39 (.094)	5.34 (.210)	9.66 (.380)	8.31 (.327)

FINISH TABLE

DASH #	
[blank]	SILVER PLATE PER QQ-S-365, TYPE III, GRADE A
-1	NONE
-2	EBANOL PER MIL-F-495 FOR BERYLLIUM COPPER PER MIL-C-13924 FOR STEEL
-3	CADMIUM PER QQ-P-416, TYPE 2, CLASS 2
-4	COPPER PLATE PER MIL-C-14550, CLASS 2
-5	GOLD PLATE PER MIL-G-45204, TYPE 1, GLASS 1
-6	NICKEL PLATE PER QQ-N-290, CLASS 1, GRADE G, BRIGHT
-7	ZINC PLATE CLEAR CHROMATE, PER ASTM-B-633, Fe/Zn 8
-8	ZINC PLATE YELLOW CHROMATE, PER ASTM-B-633, Fe/Zn 8

NOTE: NO FINISH (-1) NOT AVAILABLE WITH 'S' STEEL MATERIAL

nVent SCHROFF, Inc.

7328 Trade Street
 San Diego, CA 92121 USA
 +1 800-525-4682

CALMARK™



Our powerful portfolio of brands:

CADDY ERICO HOFFMAN RAYCHEM SCHROFF TRACER