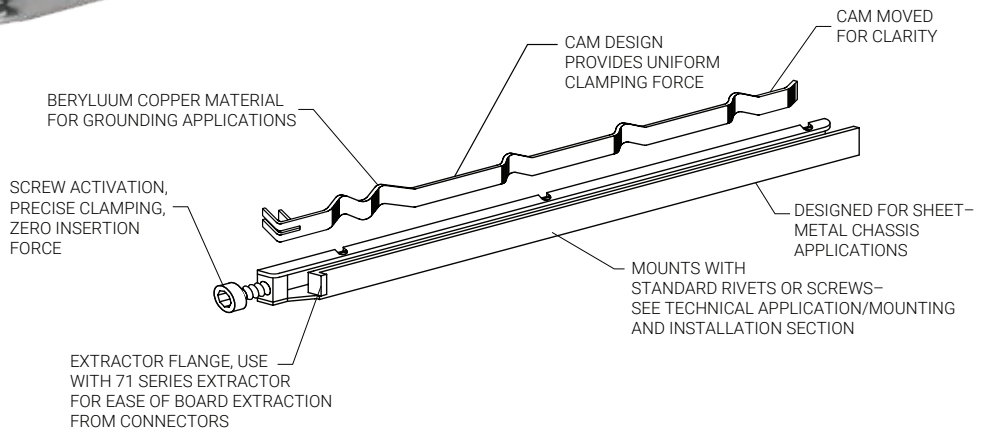


# Series 127 Lok-Tainer

CONNECT AND PROTECT



## WEIGHT

1.29g/cm (.116 oz/in)

## RECOMMENDED TORQUE

17.7 N-cm (25 in-oz)

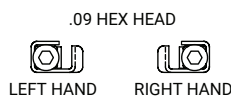
## MATERIALS AND FINISH

### HOUSING

- **Material:**  
.025-in. (.64-mm) thick Beryllium Copper per QQ-C-533
- **Finish:**  
See finish table on opposite page

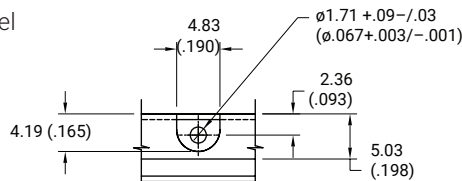
### CAM

- **Material:**  
Beryllium Copper per QQ-C-533
- **Finish:**  
See finish table on opposite page

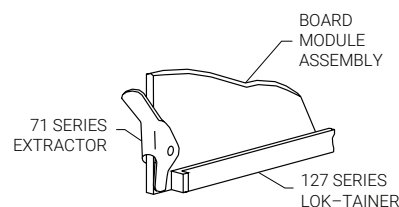
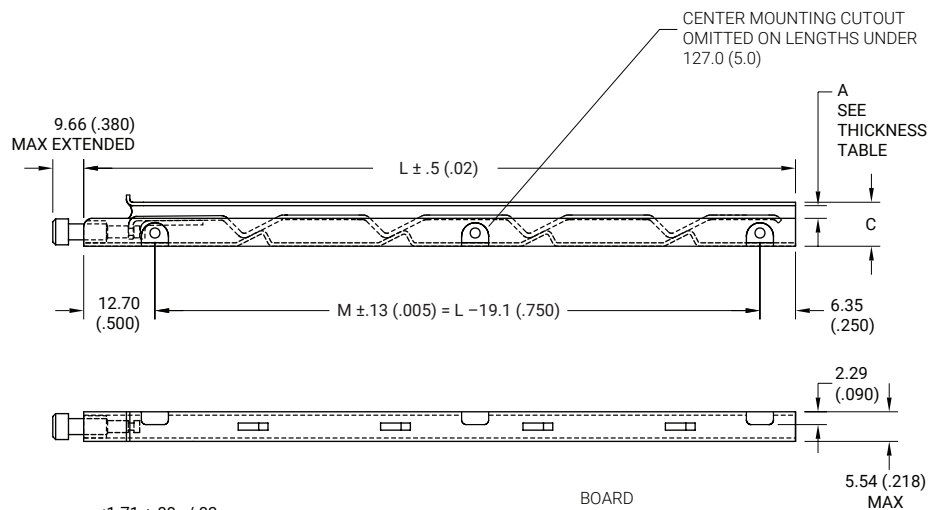


### SCREW

- **Material:** Stainless steel
- **Finish:** Passivated



MOUNTING HOLE DETAIL

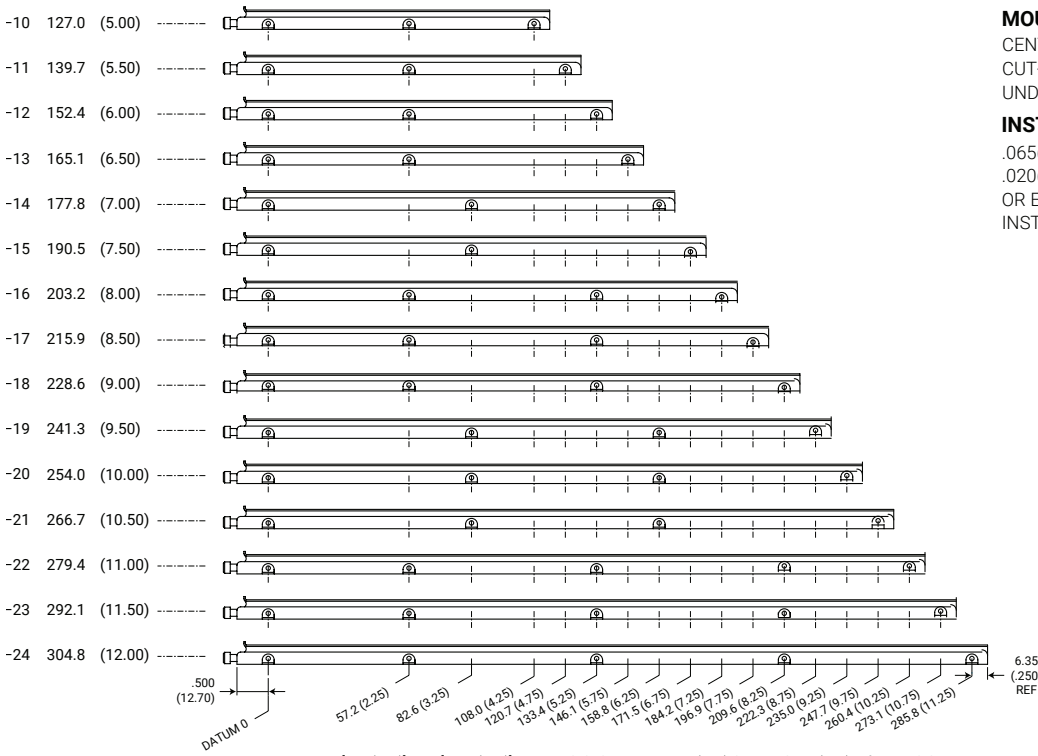


71 SERIES EXTRACTOR  
OPTIONAL/NOT TO SCALE

Units: mm (in)  
Unless specified otherwise,  
.xx = ± .25, .x = ± .5  
(.xxx = ±.010, .xx = ± .02)

# SERIES 127 LOK-TAINER

## MOUNTING HOLE DIMENSIONS



### MOUNTING HOLE NOTE:

CENTER MOUNTING HOLE AND CUT-OUT IS ELIMINATED ON LENGTHS UNDER 5 INCHES (127 mm).

### INSTALLATION NOTES:

.065(1.65) DIAMETER RIVET WITH .020(.51) MAXIMUM HEAD HEIGHT OR EYELET MAY BE USED FOR INSTALLING RETAINERS.

<b>Part Number Code</b>	
Series 127 LOK-TAINER Screw-Actuated	127 - B - 2 - 10 - 5 - L
<b>Material</b>	
Beryllium Copper	B
or select from Materials Table	
<b>Board Thickness</b>	
1.60 (.063) PCB Thickness	2
or select from Board Thickness	
<b>Length</b>	
Length in 12.7 (.50) increments	6 [76.2 (3.00)]
	to 24 [304.8 (12.00)]
<b>Finish</b>	
Gold Plate	5
or select from Finish Table	
<b>Screw Action</b>	
Left hand	L
Right hand	R

### Part Number Code example: 127B-4-12-6-R

Series 127 Screw-actuated LOK-TAINER, Beryllium Copper housing with flange, 152.4 mm (6.00 in.) long, Nickel plate finish, and right hand screw action.

### MATERIALS TABLE

CODE LETTER	
B	BERYLLIUM COPPER, 1/4H PER ASTM-B-194
S	STEEL PER ASTM-A-366

### BOARD THICKNESS TABLE

DASH #	BOARD THICKNESS		
	A MIN	A MAX	C
-2	.025 (0.64)	.070 (1.78)	.309 (7.85)
-4	.087 (2.21)	.132 (3.36)	.376 (9.55)

### FINISH TABLE

DASH #	
[blank]	SILVER PLATE PER QQ-S-365, TYPE III, GRADE A
-1	NONE
-2	EBANOL PER MIL-F-495 FOR BERYLLIUM COPPER PER MIL-C-13924 FOR STEEL
-3	CADMIUM PER QQ-P-416, TYPE 2, CLASS 2
-4	COPPER PLATE PER MIL-C-14550, CLASS 2
-5	GOLD PLATE PER MIL-G-45204, TYPE 1, GLASS 1
-6	NICKEL PLATE PER QQ-N-290, CLASS 1, GRADE G, BRIGHT
-7	ZINC PLATE CLEAR CHROMATE, PER ASTM-B-633, Fe/Zn 8
-8	ZINC PLATE YELLOW CHROMATE, PER ASTM-B-633, Fe/Zn 8
NOTE:	NO FINISH (-1) NOT AVAILBLE WITH 'S' STEEL MATERIAL

# CALMARK™

nVent SCHROFF, Inc. 7328 Trade Street, San Diego, CA 92121 USA, +1 800-525-4682



Our powerful portfolio of brands:

CADDY ERICO HOFFMAN RAYCHEM SCHROFF TRACER