

Series 311 Inserter/Extractor

CONNECT AND PROTECT

SERIES 311 TOLERANCE-COMPENSATING INSERTER/ EXTRACTOR



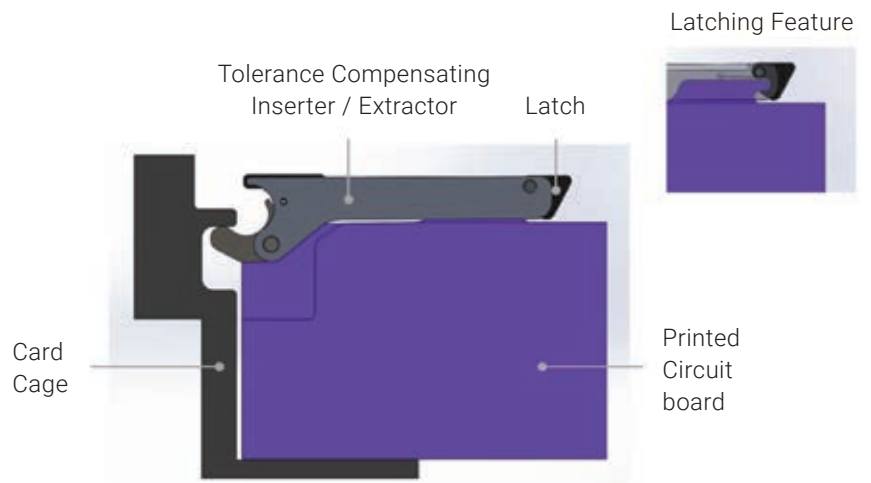
APPLICATION

Tolerance compensating, latching inserter / extractor that provides positive pressure to connectors during insertion preventing disconnects due to shock and vibration.

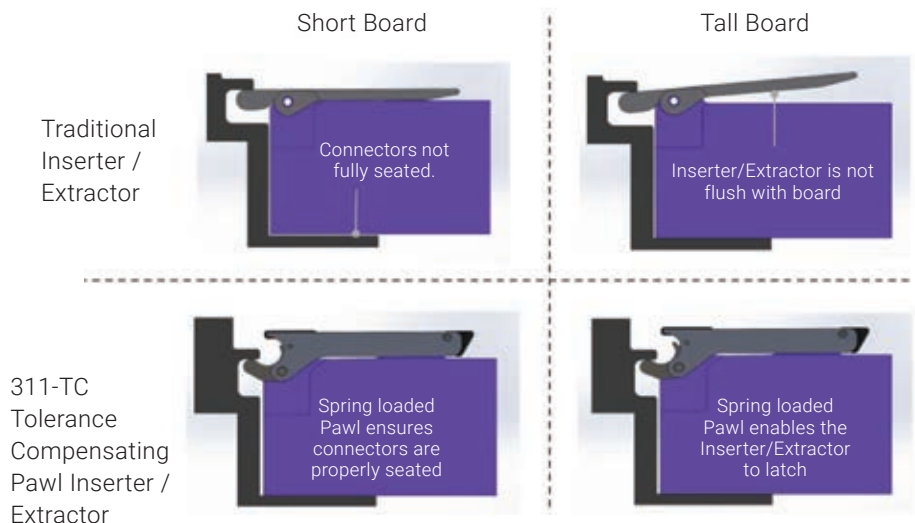
FEATURES

- Designed in accordance to VITA 48.2,48.4, and 48.5 specifications for the "alternate lever implementation" (both 3U and 6U)
- Maintains positive pressure on connectors during Card-Lok actuation
- Compliant with 2nd level maintenance; can be operated with a gloved hand, no specialized tools are required
- Provides self-compensation for board tolerances
- Integrated latching mechanism
- Custom silkscreen available

Conduction Cooled Assembly diagram with board inserted and lever latched



Comparison Series 311 vs a Traditional Inserter / Extractor



Part Number Code	
Series 311 Inserter/Extractor	HA 311 - TC
Hard Black Anodized	
Tolerance Compensating	

SERIES 311 INSERTER/EXTRACTOR

MATERIALS AND FINISH

PAWL

- **Material:** SST 304 per AMS-QQ-S-763 OR ASTM-A240
- **Finish:** Black Oxide per MIL-DTL-13924

LEVER, LATCH

- **Material:** 6061-T6 per ASTM- B221, ASTM B-209, OR AMS-QQ-A-200/8
- **Finish:** Hard Black Anodize, Type III, Class 2 per MIL-A-8625

MAIN SPRING

- **Material:** 17-7 PH SST CON TH1050 PER AMS 2759/3
- **Finish:** Black Oxide per MIL-DTL-13924

LATCH PIN

- **Material:** 302 1/2H SST PER AMS-5637 OR 300 Series SST per ASTM A581/A582
- **Finish:** Passivated per AMS2700

BODY PIN

- **Material:** 302 SST per NAS1407N
- **Finish:** Passivated per AMS2700

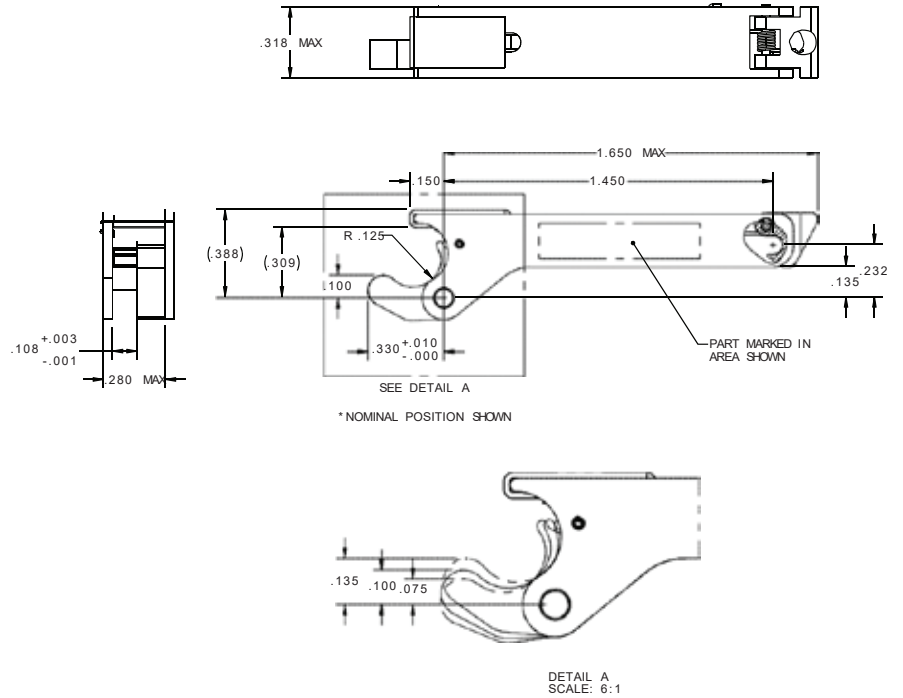
PIVOT PIN

- **Material:** 17-4 H1025 SST per AMS 5643
- **Finish:** Passivated per AMS2700

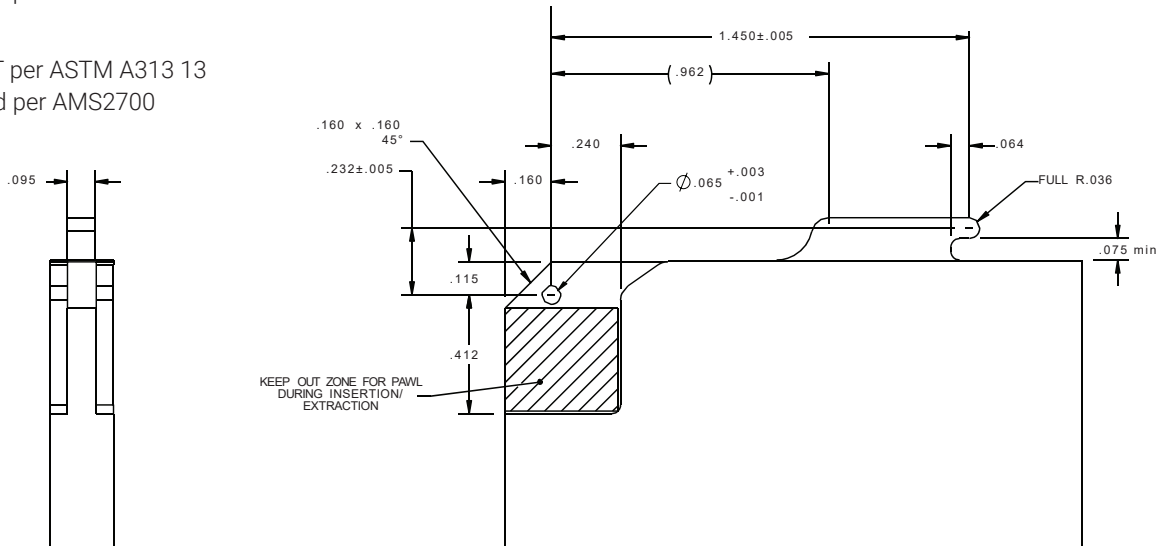
TORSION SPRING

- **Material:** 302 SST per ASTM A313 13
- **Finish:** Passivated per AMS2700

Series 311 Inserter/Extractor Dimensions



Conduction Cooled Assembly Interface Dimensions



nVent SCHROFF, Inc.

7328 Trade Street San Diego,
CA 92121 USA
+1 800-525-4682



Our powerful portfolio of brands:

CADDY ERICO HOFFMAN RAYCHEM SCHROFF TRACER