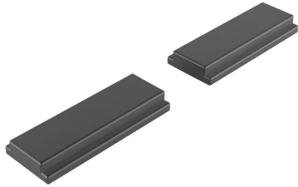


57275 MAGNET FOR MOUNTING COMPACT LED-LIGHT 550LM



KEY FEATURES

Lights can be easily mounted vertically or horizontally.

Simple through-wiring based on a plug-and-play system.

PRODUCT ATTRIBUTES

Product Type: Light

Type: Cabinet Light

Accessory Type: Lights

Color: Black

Depth: 4 mm

Finish: Smooth Matte

Height: 30 mm

Weight: 0.08 kg

Width: 12 mm

ADDITIONAL PRODUCT DETAILS

The enclosure light provides a compact and flexible solution, and offers fast, easy assembly and installation. For mounting flexibility, the LED light can be fastened to the enclosure with screws or quickly attached to any flat steel surfaces with optional magnetic kits. A motion sensor is also available.

North America

All locations

+1.763.422.2661

Chat with us:

schroff.nvent.com

Europe

Straubenhardt, Germany

+49.7082.794.0

Betschdorf, France

+33.3.88.90.64.90

Warsaw, Poland

+48.22.209.98.35

Assago, Italy

+39.02.932.7141

Chat with us:

schroff.nvent.com

Asia

Shanghai, China

+86.21.2412.6943

Qingdao, China

+86.532.8771.6101

Singapore

+65.6768.5800

Shin-Yokohama, Japan

+81.45.476.0271

Chat with us:

schroff.nvent.com

Middle East & India

Dubai, United Arab Emirates

+971.4.378.1700

Bangalore, India

+91.80.6715.2001

Istanbul, Turkey

+90.216.250.7374

Chat with us:

schroff.nvent.com



Our powerful portfolio of brands:
nVent.com **CADDY ERICO HOFFMAN RAYCHEM SCHROFF TRACER**

© 2024 nVent. All nVent marks and logos are owned or licensed by nVent Services GmbH or its affiliates. All other trademarks are the property of their respective owners.

nVent reserves the right to change specifications without notice.